

Month

8



1. TIME RECORDING

Average time units Client time budgetted per Professional fee-earner/day

63

Fee-Earner Target hours/day on average	6.28
Average achieved for the month on days worked	5.51

55	87%
----	-----

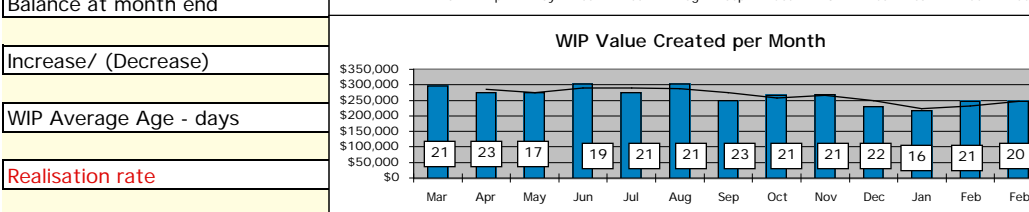
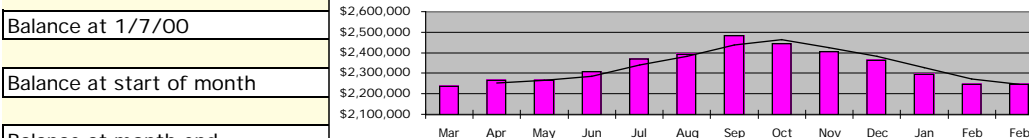
Average monthly W.I.P. this Fin Year

Value of Actual Time Recorded This Month by fee-earners	
Value of potential time based on days worked this month	
Total (Shortfall)/Surplus This Month	
Total (Shortfall)/Surplus YTD	8 Months
Total (Shortfall)/Surplus YTD Annualised i.e. extended to 12 months (approx)	
Time recorded YTD (compared to Fees YTD) over	8 months to date.

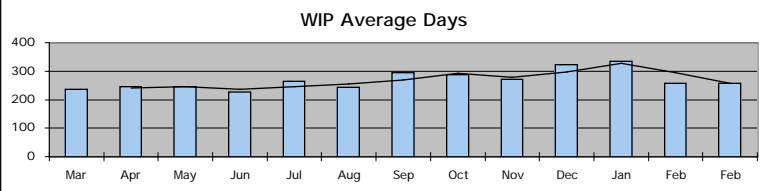
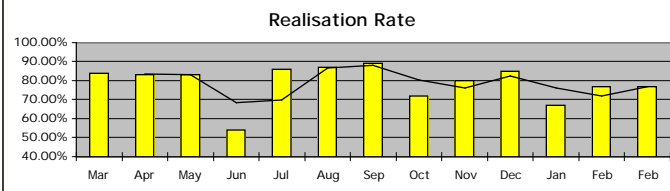
\$273,686	
\$ 246,863	
\$ 257,785	
(\$10,922)	
(\$101,437)	
(\$153,692)	
\$ 2,189,487	Should Realise
89%	\$1,948,643

2. WORK IN PROGRESS

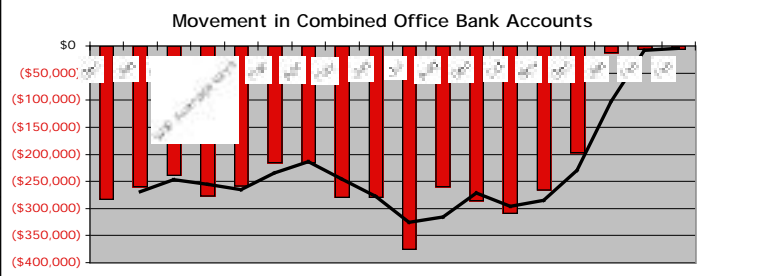
Work in Progress



Balance at 1/7/00	\$2,393,227	Full year projection next 12 months	\$2,911,654
Balance at start of month	\$2,294,697		
Balance at month end	\$2,246,603		
Increase/ (Decrease)	(\$48,094)		
WIP Average Age - days	257.54	This Month	
Realisation rate	77%	This Month	
	80%	This Financial Yr	
	89%	Last 13 Mths	



3. OFFICE A/C BANKING	Total banked	\$266,478
	Desirable level	\$345,000
	Payments	\$312,533
Reconciled balance at month end		(\$61,827)
Average OD during Month		(\$4,979)

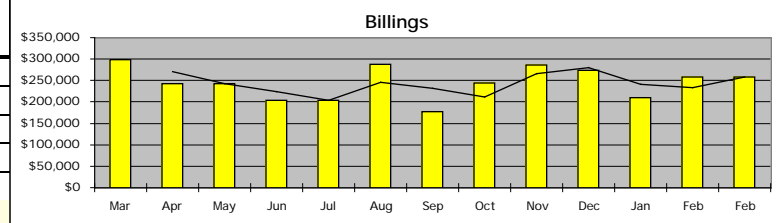


4. PROFITABILITY

A. Combined Income:	
Less: Combined Expenses:	
NET INCOME	
Billings not collections!	
Net profit percentage	

	BUDGET	ACTUAL	BUDGET	ACTUAL	
	This Month		Year to Date		
	\$298,051	\$257,771	\$2,359,983	\$1,940,482	82%
			Avg. Total Income	\$242,560	Per Month YTD
	\$200,000	\$131,641	\$1,600,000	\$1,283,290	80%
			Avg. Expenses	\$160,411	Per Month YTD
	\$98,051	\$126,130	\$759,983	\$657,192	86%
			Avg. Profit	\$82,149	Per Month YTD
	32.90%	48.93%	32.20%	33.87%	

Total per Partner Returns before Tax and Capital Payments	
This year we aimed to average	\$395,696
We've averaged so far:	\$219,064
If we achieve Budget from now on, we'd now average:	\$349,799
No. of Partners	3



5. DISBURSEMENTS (Unbilled Disbursements)

Balance at 1/7/00		\$708,402
Balance at start of month		\$587,483
Balance at end of month		\$584,987
This represents an increase/(decrease) of		(\$2,496)

6. DEBTORS

Balance at 1/7/00		\$728,055
Balance at start of month		\$656,439
Balance at end of month		\$714,987
This represents an increase/(decrease) of		\$58,548

Av. days o/s this Month		74.48
Av. days o/s last Month		101.50
Det/(Imp) in Cash Flow		(27.02)
		DAYS
		Net Debtors w/off This MTH

	91+	60	30	Current	Total
Spread This Month	\$407,922	\$15,872	\$66,063	\$225,131	\$714,988
Spread Last Month	\$363,221	\$78,602	\$51,134	\$163,482	\$656,439
Percentage collected/category this Mth		8%	69%	60%	13% Collected from the Mths Bills

7. CAPITAL LOCKED UP

Lockup 1/7/00		\$3,829,684
Target Lockup		\$3,215,000
Capital Locked Up		\$3,546,577
Excess Capital Locked Up		\$331,577
Excess Capital Last Mth		\$323,619

8. NEW WORK

	This Month	Last Month	Prev. Mths. Avge.
Number of files opened	77	117	79.72
Value of Files (opening estimate)	\$127,336		
Value of Files opened assuming avge of:	\$3,055	\$235,270	
Files open at present	1,174		

		<p>N.B. Average monthly WIP created \$273,686 realised at 89% should let you bill \$243,581 per avge. month \$3,055 per file</p>
--	--	---

9. Combined Firm Creditors (Firm & Service Co.)

31/1/99		Not supplied
Last Month		Not supplied
This Month		#VALUE!
Improvement(Deterioration)		